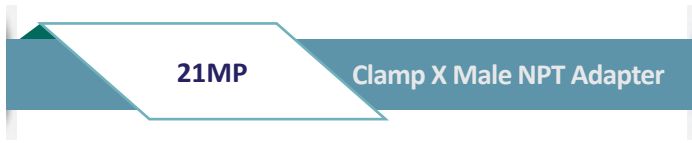
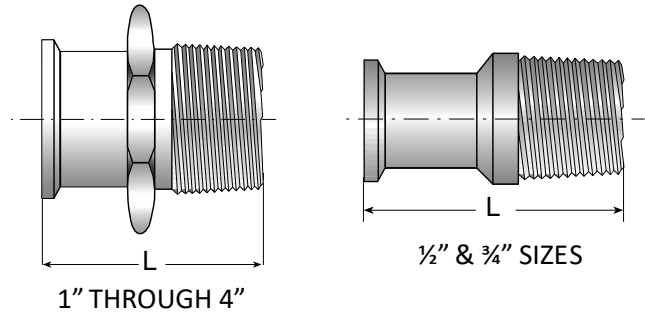


ADAPTERS



| Nominal Size In. | L | | Ordering Code |
|------------------|-------|-------|------------------|
| | in. | mm | |
| 1/2" | 2.000 | 50.80 | 015000-A30-A* ** |
| 3/4" | 1.787 | 45.40 | 020000-A30-A* ** |
| 1.0" | 2.250 | 57.15 | 025000-A30-A* ** |
| 1½" | 2.250 | 57.15 | 038000-A30-A* ** |
| 2.0" | 2.638 | 67.0 | 051000-A30-A* ** |
| 2½" | 2.875 | 73.0 | 063000-A30-A* ** |
| 3.0" | 3.070 | 78.0 | 076000-A30-A* ** |
| 4.0" | 3.155 | 80.1 | 100000-A30-A* ** |



* The first digit refers to material guide, according to Table 1
 ** The last digit refers to surface quality, according to Table 2

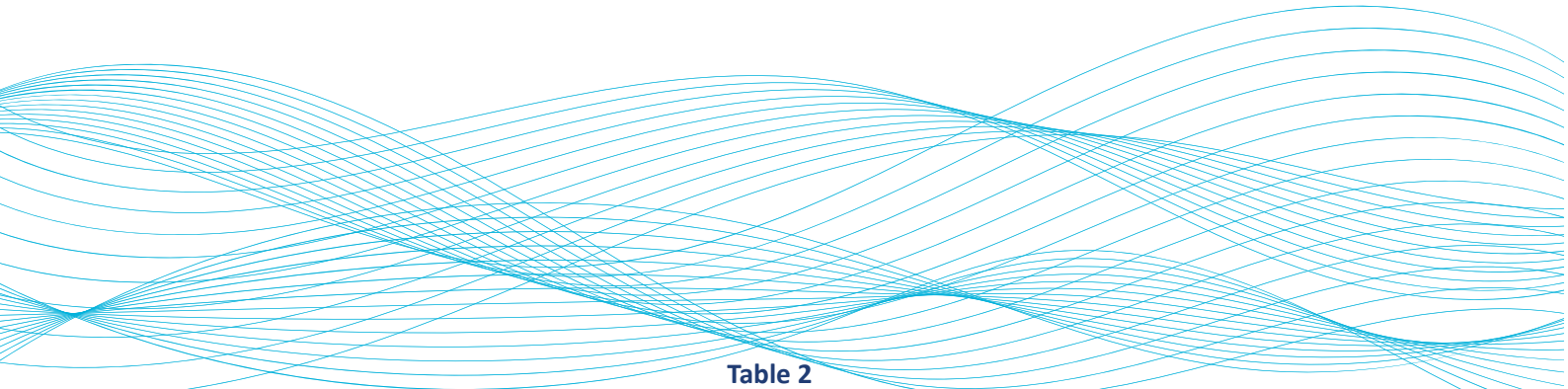


Table 1

| 304 (1.4301) | 304L (1.4307) | 316L (1.4404) |
|--------------|---------------|---------------|
| 1 | 2 | 5 |

Table 2

| Inside Surface | Outside Surface | Ordering Code |
|-----------------------------|----------------------------|---------------|
| 180 grid/0.8 μm Ra/30 μ-in | Unpolished/Mill Finish | 0 |
| 180 grid/0.8 μm Ra/30 μ-in | 180 grid/0.8 μm Ra/30 μ-in | 1 |
| 240 grid/0.51 μm Ra/20 μ-in | 180 grid/0.8 μm Ra/30 μ-in | 4 |
| 320 grid/0.4 μm/12 μ-in | 180 grid/0.8 μm Ra/30 μ-in | 7 |
| 400 grid/0.25 μm Ra/10 μ-in | 180 grid/0.8 μm Ra/30 μ-in | 8 |
| Mirror Polished | 180 grid/0.8 μm Ra/30 μ-in | 9 |

*Mechanically Polished

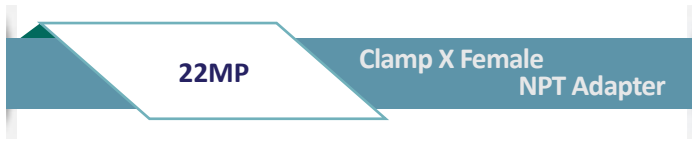


Ordering Example

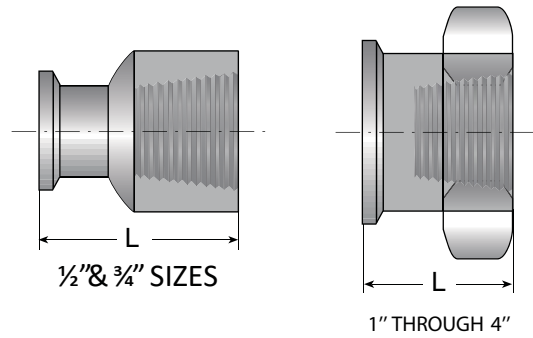
| Description | Nominal Size In. | Ordering Code |
|-------------|------------------|-----------------|
| Type A30 | 1/2" | 015000-A30-A54* |

*Material and Surface are including to the ordering code

ADAPTERS



| Nominal Size In. | L | | Ordering Code |
|------------------|-------|------|------------------|
| | in. | mm | |
| 1/2" | 1.500 | 38.1 | 015000-A31-A* ** |
| 3/4" | 1.625 | 41.3 | 020000-A31-A* ** |
| 1.0" | 1.625 | 41.3 | 025000-A31-A* ** |
| 1 1/2" | 2.250 | 57.1 | 038000-A31-A* ** |
| 2.0" | 2.406 | 61.1 | 051000-A31-A* ** |
| 2 1/2" | 2.187 | 55.5 | 063000-A31-A* ** |
| 3.0" | 2.187 | 55.5 | 076000-A31-A* ** |
| 4.0" | 2.625 | 66.7 | 100000-A31-A* ** |



* The first digit refers to material guide, according to Table 1
 ** The last digit refers to surface quality, according to Table 2

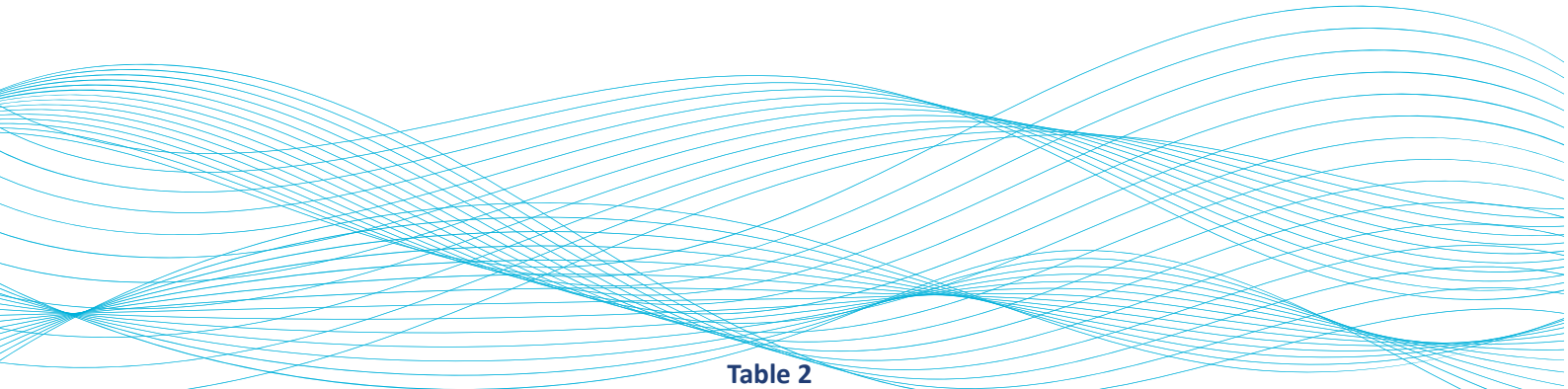


Table 1

| 304 (1.4301) | 304L (1.4307) | 316L (1.4404) |
|--------------|---------------|---------------|
| 1 | 2 | 5 |

Table 2

| Inside Surface | Outside Surface | Ordering Code |
|-----------------------------|----------------------------|---------------|
| 180 grid/0.8 μm Ra/30 μ-in | Unpolished/Mill Finish | 0 |
| 180 grid/0.8 μm Ra/30 μ-in | 180 grid/0.8 μm Ra/30 μ-in | 1 |
| 240 grid/0.51 μm Ra/20 μ-in | 180 grid/0.8 μm Ra/30 μ-in | 4 |
| 320 grid/0.4 μm/12 μ-in | 180 grid/0.8 μm Ra/30 μ-in | 7 |
| 400 grid/0.25 μm Ra/10 μ-in | 180 grid/0.8 μm Ra/30 μ-in | 8 |
| Mirror Polished | 180 grid/0.8 μm Ra/30 μ-in | 9 |

*Mechanically Polished

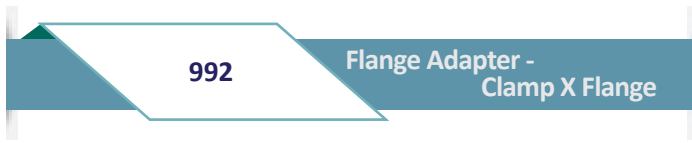


Ordering Example

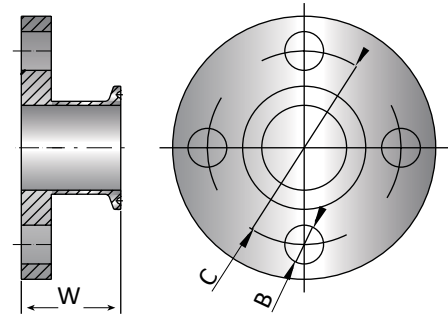
| Description | Nominal Size In. | Ordering Code |
|-------------|------------------|-----------------|
| Type A31 | 1/2" | 015000-A31-A54* |

*Material and Surface are including to the ordering code

ADAPTERS



| Nominal Size In. | W | | B | | C | | Ordering Code |
|------------------|-------|------|-------|------|-------|-------|------------------|
| | in. | mm | in. | mm | in. | mm | |
| 1.0" | 1.625 | 41.3 | 0.625 | 15.9 | 3.125 | 79.40 | 025000-992-A* ** |
| 1½" | 1.625 | 41.3 | 0.625 | 15.9 | 3.875 | 98.40 | 038000-992-A* ** |
| 2.0" | 1.750 | 44.4 | 0.750 | 19.0 | 4.750 | 120.6 | 051000-992-A* ** |
| 2½" | 1.750 | 44.4 | 0.750 | 19.0 | 5.500 | 139.7 | 063000-992-A* ** |
| 3.0" | 1.750 | 44.4 | 0.750 | 19.0 | 6.000 | 152.4 | 076000-992-A* ** |
| 4.0" | 1.750 | 44.4 | 0.750 | 19.0 | 7.500 | 190.5 | 100000-992-A* ** |
| 6.0" | 2.188 | 55.6 | 0.875 | 22.2 | 9.500 | 241.3 | 150000-992-A* ** |



* The first digit refers to material guide, according to Table 1
 ** The last digit refers to surface quality, according to Table 2

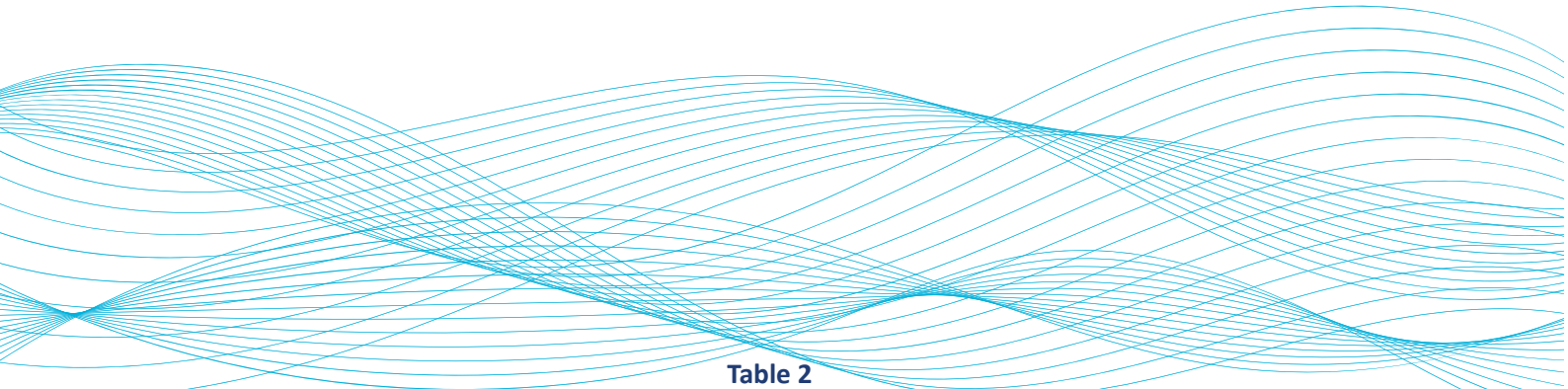


Table 1

| 304 (1.4301) | 304L (1.4307) | 316L (1.4404) |
|--------------|---------------|---------------|
| 1 | 2 | 5 |

Table 2

| Inside Surface | Outside Surface | Ordering Code |
|-----------------------------|----------------------------|---------------|
| 180 grid/0.8 µm Ra/30 µ-in | Unpolished/Mill Finish | 0 |
| 180 grid/0.8 µm Ra/30 µ-in | 180 grid/0.8 µm Ra/30 µ-in | 1 |
| 240 grid/0.51 µm Ra/20 µ-in | 180 grid/0.8 µm Ra/30 µ-in | 4 |
| 320 grid/0.4 µm/12 µ-in | 180 grid/0.8 µm Ra/30 µ-in | 7 |
| 400 grid/0.25 µm Ra/10 µ-in | 180 grid/0.8 µm Ra/30 µ-in | 8 |
| Mirror Polished | 180 grid/0.8 µm Ra/30 µ-in | 9 |

*Mechanically Polished



Ordering Example

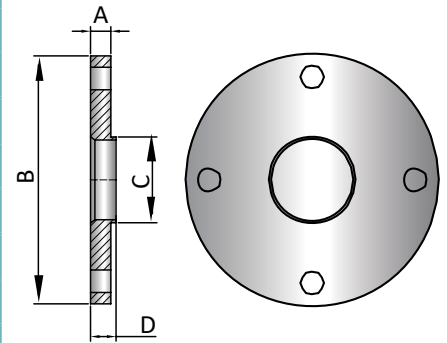
| Description | Nominal Size In. | Ordering Code |
|-------------|------------------|-----------------|
| Type 992 | 1" | 025000-992-A54* |

*Material and Surface are including to the ordering code

WELD FITTINGS FLANGES



| Nominal Size In. | A | | B | | C | | D | | Ordering Code |
|------------------|-------|------|-------|-------|------|-------|-------|------|------------------|
| | in. | mm | in. | mm | in. | mm | in. | mm | |
| 1.0" | 0.375 | 9.5 | 4.25 | 107.9 | 1.0 | 25.4 | 0.500 | 12.7 | 025000-996-A* ** |
| 1½" | 0.375 | 9.5 | 5.00 | 127.0 | 1.5 | 38.1 | 0.500 | 12.7 | 038000-996-A* ** |
| 2.0" | 0.500 | 12.7 | 6.00 | 152.4 | 2.0 | 50.8 | 0.625 | 15.9 | 051000-996-A* ** |
| 2½" | 0.500 | 12.7 | 7.00 | 177.8 | 2.5 | 63.5 | 0.625 | 15.9 | 063000-996-A* ** |
| 3.0" | 0.500 | 12.7 | 7.50 | 190.5 | 3.0 | 76.2 | 0.625 | 15.9 | 076000-996-A* ** |
| 4.0" | 0.500 | 12.7 | 9.00 | 228.6 | 4.0 | 101.6 | 0.625 | 15.9 | 100000-996-A* ** |
| 6.0" | 0.500 | 12.7 | 11.00 | 279.4 | 6.0 | 152.4 | 0.625 | 15.9 | 150000-996-A* ** |
| 8.0" | 0.500 | 12.7 | 13.50 | 342.9 | 8.0 | 203.2 | 0.625 | 15.9 | 200000-996-A* ** |
| 10.0" | 0.500 | 12.7 | 16.00 | 406.4 | 10.0 | 254.0 | 0.625 | 15.9 | 300000-996-A* ** |



* The first digit refers to material guide, according to Table 1
 ** The last digit refers to surface quality, according to Table 2

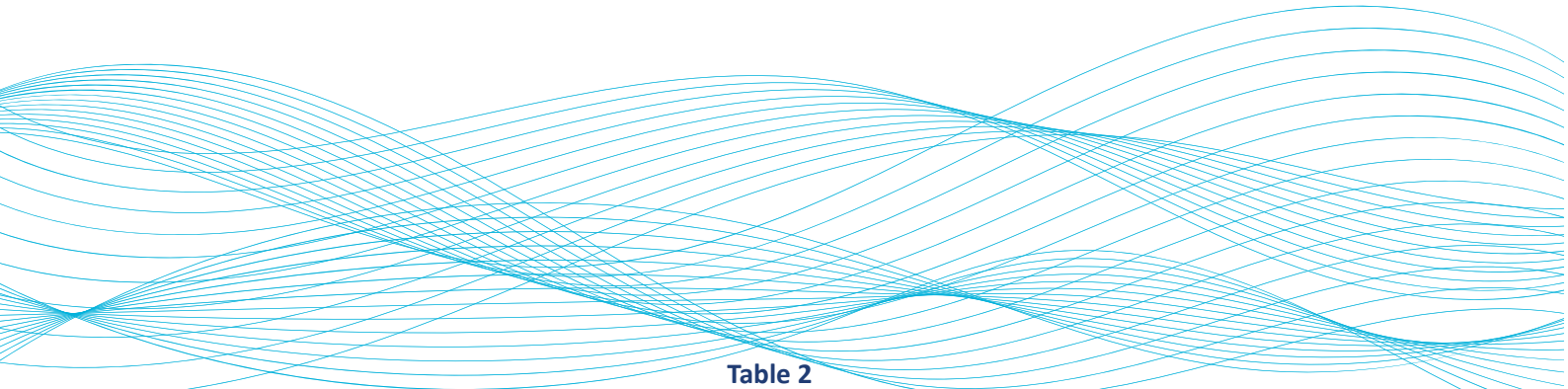


Table 1

| 304 (1.4301) | 304L (1.4307) | 316L (1.4404) |
|--------------|---------------|---------------|
| 1 | 2 | 5 |

Table 2

| Inside Surface | Outside Surface | Ordering Code |
|-----------------------------|----------------------------|---------------|
| 180 grid/0.8 µm Ra/30 µ-in | Unpolished/Mill Finish | 0 |
| 180 grid/0.8 µm Ra/30 µ-in | 180 grid/0.8 µm Ra/30 µ-in | 1 |
| 240 grid/0.51 µm Ra/20 µ-in | 180 grid/0.8 µm Ra/30 µ-in | 4 |
| 320 grid/0.4 µm/12 µ-in | 180 grid/0.8 µm Ra/30 µ-in | 7 |
| 400 grid/0.25 µm Ra/10 µ-in | 180 grid/0.8 µm Ra/30 µ-in | 8 |
| Mirror Polished | 180 grid/0.8 µm Ra/30 µ-in | 9 |

*Mechanically Polished

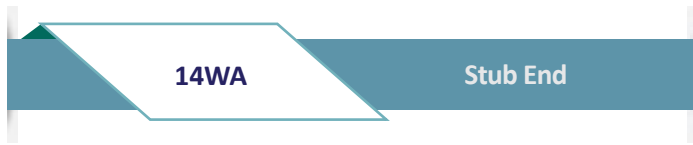


Ordering Example

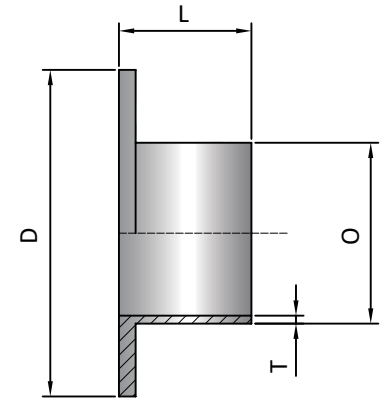
| Description | Nominal Size In. | Ordering Code |
|-------------|------------------|-----------------|
| Type 996 | 1" | 025000-996-A54* |

*Material and Surface are including to the ordering code

WELD FITTINGS FLANGES



| Nominal Size In. | L | | D | | O | | T | | Ordering Code |
|------------------|-------|------|--------|-------|------|-------|-------|------|------------------|
| | in. | mm | in. | mm | in. | mm | in. | mm | |
| 1.0" | 1.625 | 41.3 | 2.000 | 50.8 | 1.0 | 25.4 | 0.065 | 1.65 | 025000-994-A* ** |
| 1½" | 1.750 | 44.4 | 2.875 | 73.0 | 1.5 | 38.1 | 0.065 | 1.65 | 038000-994-A* ** |
| 2.0" | 1.500 | 38.1 | 3.625 | 92.0 | 2.0 | 50.8 | 0.065 | 1.65 | 051000-994-A* ** |
| 2½" | 2.000 | 50.8 | 4.125 | 104.8 | 2.5 | 63.5 | 0.065 | 1.65 | 063000-994-A* ** |
| 3.0" | 2.250 | 57.1 | 5.000 | 127.0 | 3.0 | 76.2 | 0.065 | 1.65 | 076000-994-A* ** |
| 4.0" | 2.625 | 66.7 | 6.187 | 157.1 | 4.0 | 101.6 | 0.084 | 2.11 | 100000-994-A* ** |
| 6.0" | 3.000 | 76.2 | 8.500 | 215.9 | 6.0 | 152.4 | 0.109 | 2.77 | 150000-994-A* ** |
| 8.0" | 3.000 | 76.2 | 10.625 | 269.9 | 8.0 | 203.2 | 0.120 | 3.05 | 200000-994-A* ** |
| 10.0" | 3.350 | 88.9 | 12.450 | 316.2 | 10.0 | 254.0 | 0.109 | 2.77 | 300000-994-A* ** |



* The first digit refers to material guide, according to Table 1
 ** The last digit refers to surface quality, according to Table 2

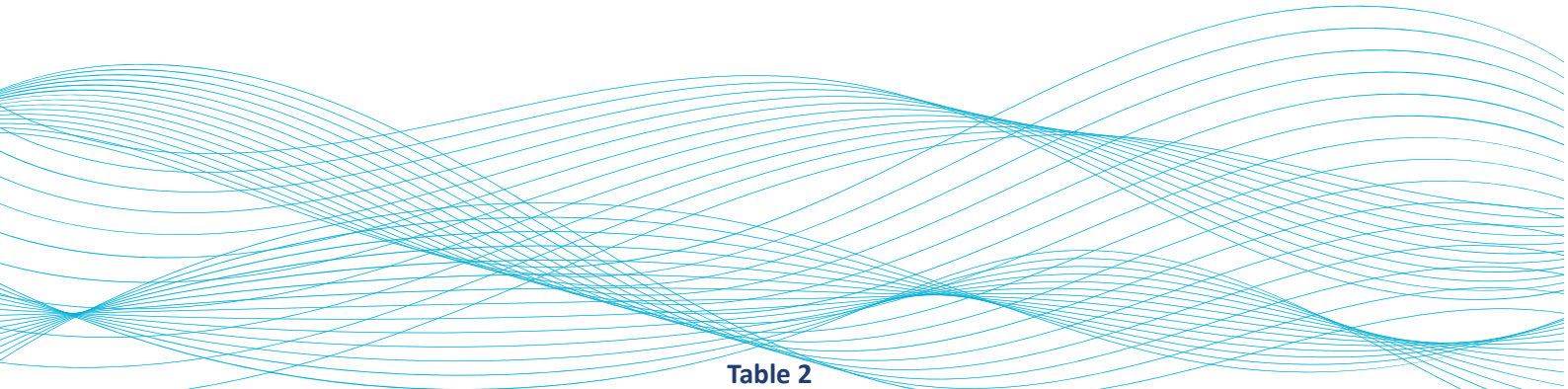


Table 1

| 304 (1.4301) | 304L (1.4307) | 316L (1.4404) |
|--------------|---------------|---------------|
| 1 | 2 | 5 |

Table 2

| Inside Surface | Outside Surface | Ordering Code |
|-----------------------------|----------------------------|---------------|
| 180 grid/0.8 µm Ra/30 µ-in | Unpolished/Mill Finish | 0 |
| 180 grid/0.8 µm Ra/30 µ-in | 180 grid/0.8 µm Ra/30 µ-in | 1 |
| 240 grid/0.51 µm Ra/20 µ-in | 180 grid/0.8 µm Ra/30 µ-in | 4 |
| 320 grid/0.4 µm/12 µ-in | 180 grid/0.8 µm Ra/30 µ-in | 7 |
| 400 grid/0.25 µm Ra/10 µ-in | 180 grid/0.8 µm Ra/30 µ-in | 8 |
| Mirror Polished | 180 grid/0.8 µm Ra/30 µ-in | 9 |

*Mechanically Polished

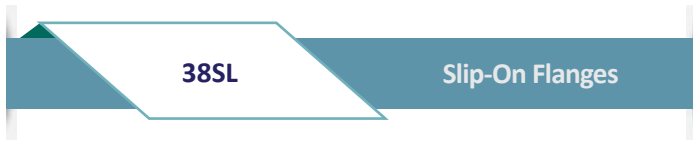


Ordering Example

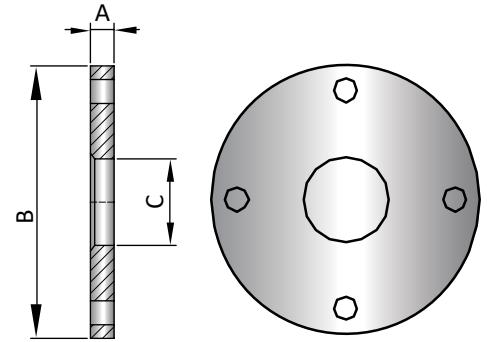
| Description | Nominal Size In. | Ordering Code |
|-------------|------------------|-----------------|
| Type 994 | 1" | 025000-994-A54* |

*Material and Surface are including to the ordering code

WELD FITTINGS FLANGES



| Nominal Size In. | A | | B | | C | | Ordering Code |
|------------------|-------|------|-------|-------|--------|-------|-----------------|
| | in. | mm | in. | mm | in. | mm | |
| 1.0" | 0.375 | 9.5 | 4.25 | 107.9 | 1.063 | 27.0 | 025000-995-A*** |
| 1½" | 0.375 | 9.5 | 5.00 | 127.0 | 1.563 | 39.7 | 038000-995-A*** |
| 2.0" | 0.437 | 11.1 | 6.00 | 152.4 | 2.063 | 52.4 | 051000-995-A*** |
| 2½" | 0.437 | 11.1 | 7.00 | 177.8 | 2.563 | 65.1 | 063000-995-A*** |
| 3.0" | 0.500 | 12.7 | 7.50 | 190.5 | 3.063 | 77.8 | 076000-995-A*** |
| 4.0" | 0.562 | 14.3 | 9.00 | 228.6 | 4.063 | 103.2 | 100000-995-A*** |
| 6.0" | 0.562 | 14.3 | 11.00 | 279.4 | 6.063 | 154.0 | 150000-995-A*** |
| 8.0" | 0.687 | 17.4 | 13.50 | 342.9 | 8.063 | 204.8 | 200000-995-A*** |
| 10.0" | 0.687 | 17.4 | 16.00 | 406.4 | 10.063 | 255.6 | 300000-995-A*** |



* The first digit refers to material guide, according to Table 1
 ** The last digit refers to surface quality, according to Table 2

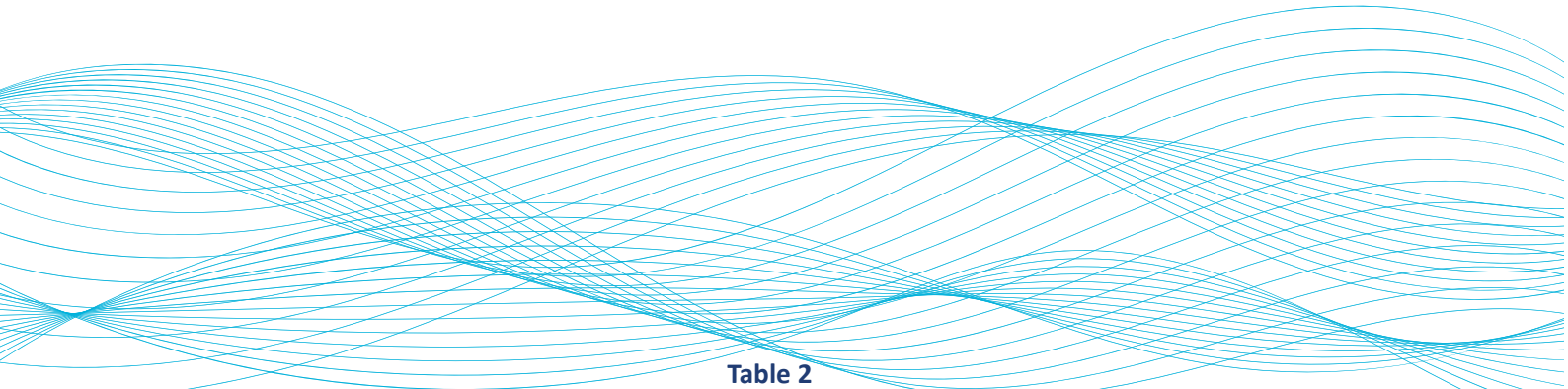


Table 1

| 304 (1.4301) | 304L (1.4307) | 316L (1.4404) |
|--------------|---------------|---------------|
| 1 | 2 | 5 |

Table 2

| Inside Surface | Outside Surface | Ordering Code |
|-----------------------------|----------------------------|---------------|
| 180 grid/0.8 µm Ra/30 µ-in | Unpolished/Mill Finish | 0 |
| 180 grid/0.8 µm Ra/30 µ-in | 180 grid/0.8 µm Ra/30 µ-in | 1 |
| 240 grid/0.51 µm Ra/20 µ-in | 180 grid/0.8 µm Ra/30 µ-in | 4 |
| 320 grid/0.4 µm/12 µ-in | 180 grid/0.8 µm Ra/30 µ-in | 7 |
| 400 grid/0.25 µm Ra/10 µ-in | 180 grid/0.8 µm Ra/30 µ-in | 8 |
| Mirror Polished | 180 grid/0.8 µm Ra/30 µ-in | 9 |

*Mechanically Polished

Ordering Example

| Description | Nominal Size In. | Ordering Code |
|-------------|------------------|-----------------|
| Type 995 | 1" | 025000-995-A54* |

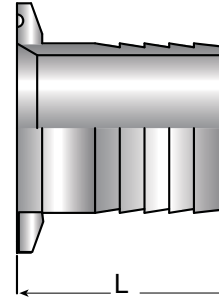
*Material and Surface are including to the ordering code



HOSE BARBS



| Nominal Size In. | L | | Ordering Code |
|------------------|-------|------|------------------|
| | in. | mm | |
| 1/2" | 0.500 | 38.0 | 015000-150-A* ** |
| 3/4" | 1.496 | 38.0 | 020000-150-A* ** |
| 1.0" | 1.687 | 42.8 | 025000-150-A* ** |
| 1½" | 1.687 | 42.8 | 038000-150-A* ** |
| 2.0" | 2.312 | 58.7 | 051000-150-A* ** |
| 2½" | 2.343 | 59.5 | 063000-150-A* ** |
| 3.0" | 3.093 | 78.5 | 076000-150-A* ** |
| 4.0" | 3.406 | 86.5 | 100000-150-A* ** |
| 6.0" | 3.406 | 86.5 | 150000-150-A* ** |
| 8.0" | 3.406 | 86.5 | 200000-150-A* ** |



* The first digit refers to material guide, according to Table 1
 ** The last digit refers to surface quality, according to Table 2

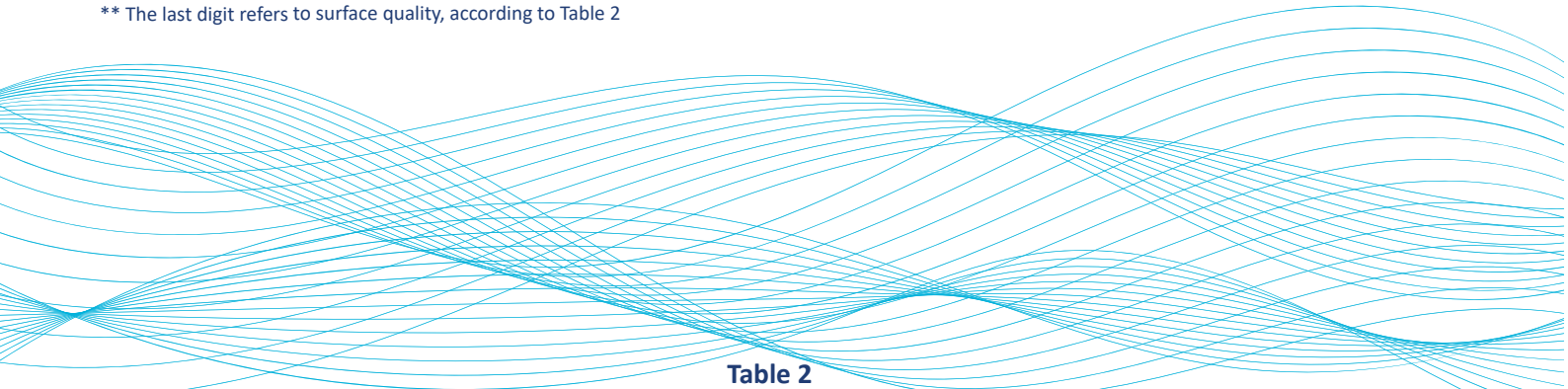


Table 1

| 304 (1.4301) | 304L (1.4307) | 316L (1.4404) |
|--------------|---------------|---------------|
| 1 | 2 | 5 |

Table 2

| Inside Surface | Outside Surface | Ordering Code |
|-----------------------------|----------------------------|---------------|
| 180 grid/0.8 µm Ra/30 µ-in | Unpolished/Mill Finish | 0 |
| 180 grid/0.8 µm Ra/30 µ-in | 180 grid/0.8 µm Ra/30 µ-in | 1 |
| 240 grid/0.51 µm Ra/20 µ-in | 180 grid/0.8 µm Ra/30 µ-in | 4 |
| 320 grid/0.4 µm/12 µ-in | 180 grid/0.8 µm Ra/30 µ-in | 7 |
| 400 grid/0.25 µm Ra/10 µ-in | 180 grid/0.8 µm Ra/30 µ-in | 8 |
| Mirror Polished | 180 grid/0.8 µm Ra/30 µ-in | 9 |

*Mechanically Polished



Ordering Example

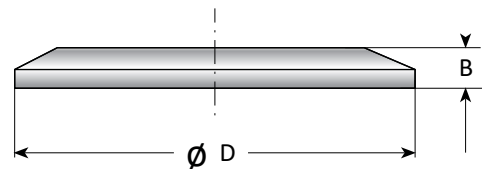
| Description | Nominal Size In. | Ordering Code |
|-------------|------------------|-----------------|
| Type B10 | 1" | 025000-150-A54* |

*Material and Surface are including to the ordering code

SOLID END CAPS



| Nominal Size In. | D | | B | | Ordering Code |
|------------------|--------|-------|-------|------|------------------|
| | in. | mm | in. | mm | |
| 0.5" - 0.75" | 0.992 | 252.0 | 0.252 | 6.4 | 015020-000-A* ** |
| | 1.339 | 34.0 | 0.252 | 6.4 | |
| 1.0" - 1.5" | 1.988 | 50.5 | 0.252 | 6.4 | 025038-000-A* ** |
| 2.0" | 2.520 | 60.4 | 0.252 | 6.4 | 051000-000-A* ** |
| 2.5" | 3.051 | 77.5 | 0.252 | 6.4 | 063000-000-A* ** |
| 3.0" | 3.583 | 91.0 | 0.252 | 6.4 | 076000-000-A* ** |
| 4.0" | 4.685 | 119.0 | 0.311 | 7.9 | 100000-000-A* ** |
| 6.0" | 6.567 | 166.8 | 0.437 | 11.1 | 150000-000-A* ** |
| 8.0" | 8.571 | 217.7 | 0.437 | 11.1 | 200000-000-A* ** |
| 10.0" | 10.571 | 268.5 | 0.437 | 11.1 | 250000-000-A* ** |
| 12.0" | 12.571 | 319.3 | 0.437 | 11.1 | 300000-000-A* ** |



* The first digit refers to material guide, according to Table 1

** The last digit refers to surface quality, according to Table 2

Table 1

| 304 (1.4301) | 304L (1.4307) | 316L (1.4404) |
|--------------|---------------|---------------|
| 1 | 2 | 5 |

Table 2

| Inside Surface | Outside Surface | Ordering Code |
|-----------------------------|----------------------------|---------------|
| 180 grid/0.8 µm Ra/30 µ-in | Unpolished/Mill Finish | 0 |
| 180 grid/0.8 µm Ra/30 µ-in | 180 grid/0.8 µm Ra/30 µ-in | 1 |
| 240 grid/0.51 µm Ra/20 µ-in | 180 grid/0.8 µm Ra/30 µ-in | 4 |
| 320 grid/0.4 µm/12 µ-in | 180 grid/0.8 µm Ra/30 µ-in | 7 |
| 400 grid/0.25 µm Ra/10 µ-in | 180 grid/0.8 µm Ra/30 µ-in | 8 |
| Mirror Polished | 180 grid/0.8 µm Ra/30 µ-in | 9 |

*Mechanically Polished



Ordering Example

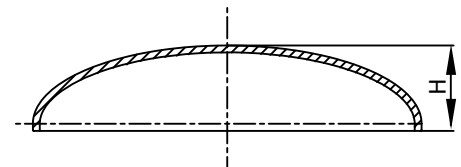
| Description | Nominal Size In. | Ordering Code |
|-------------|------------------|-----------------|
| Type 000 | 0.5" - 0.75" | 015020-000-A5D* |

*Material and Surface are including to the ordering code

WELD FITTINGS CAPS



| Nominal Size In. | H | | Ordering Code |
|------------------|-------|-------|------------------|
| | in. | mm | |
| 1.0" | 0.375 | 9.50 | 025000-003-A* ** |
| 1½" | 0.562 | 14.30 | 038000-003-A* ** |
| 2.0" | 0.750 | 19.05 | 051000-003-A* ** |
| 2½" | 1.000 | 25.40 | 063000-003-A* ** |
| 3.0" | 1.250 | 31.70 | 076000-003-A* ** |
| 4.0" | 1.550 | 38.10 | 100000-003-A* ** |
| 6.0" | 1.875 | 47.60 | 150000-003-A* ** |
| 8.0" | 2.500 | 63.50 | 200000-003-A* ** |



* The first digit refers to material guide, according to Table 1
 ** The last digit refers to surface quality, according to Table 2

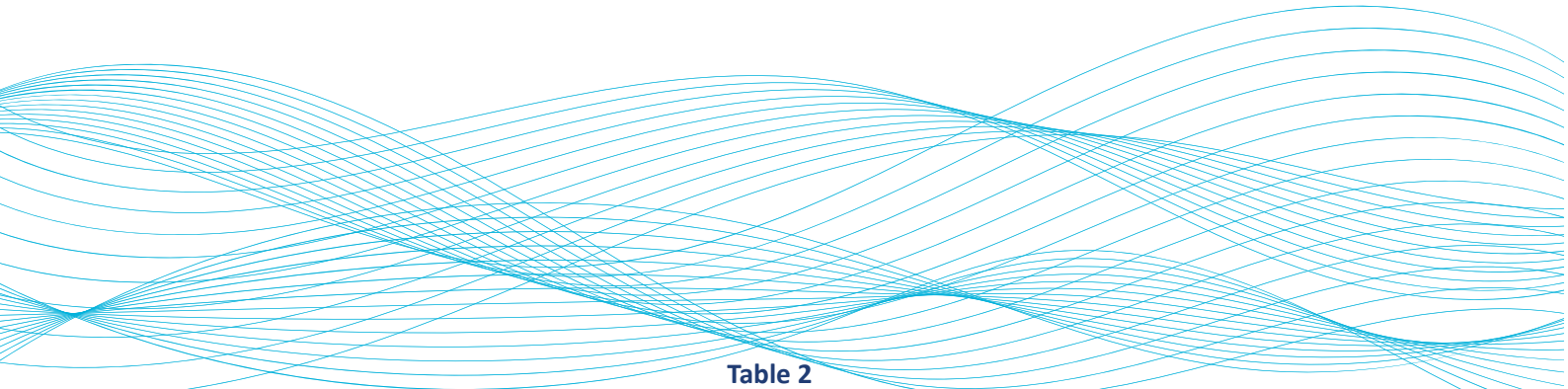


Table 1

| 304 (1.4301) | 304L (1.4307) | 316L (1.4404) |
|--------------|---------------|---------------|
| 1 | 2 | 5 |

Table 2

| Inside Surface | Outside Surface | Ordering Code |
|-----------------------------|----------------------------|---------------|
| 180 grid/0.8 μm Ra/30 μ-in | Unpolished/Mill Finish | 0 |
| 180 grid/0.8 μm Ra/30 μ-in | 180 grid/0.8 μm Ra/30 μ-in | 1 |
| 240 grid/0.51 μm Ra/20 μ-in | 180 grid/0.8 μm Ra/30 μ-in | 4 |
| 320 grid/0.4 μm/12 μ-in | 180 grid/0.8 μm Ra/30 μ-in | 7 |
| 400 grid/0.25 μm Ra/10 μ-in | 180 grid/0.8 μm Ra/30 μ-in | 8 |
| Mirror Polished | 180 grid/0.8 μm Ra/30 μ-in | 9 |

*Mechanically Polished



Ordering Example

| Description | Nominal Size In. | Ordering Code |
|-------------|------------------|-----------------|
| Type 003 | 1" | 025000-003-A54* |

*Material and Surface are including to the ordering code